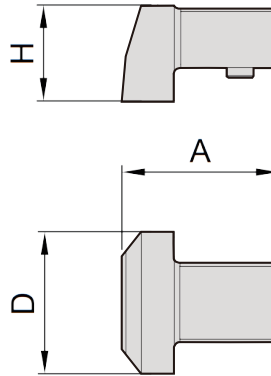
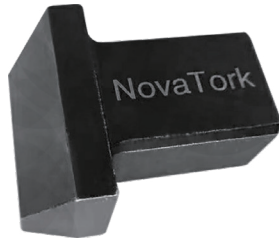


**H Series Welding Joint Fittings**

Can be welded with various special-shaped opening plug-ins.



**H** Model

Metric

Item No.	Shank Size mm	A mm	H mm	D mm	Weight g
H912	9x12	23.8	14.5	21.5	27
H1418	14x18	38	21.4	30	92
H2432	24x32	66	36.5	35	430

