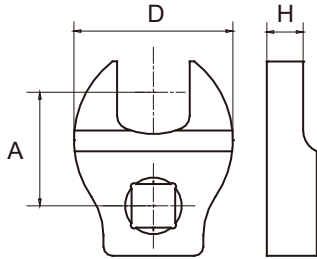


OD Series Square Hole Crowfoot Wrench

For Ratchet Head Torque Wrenches



OD Model

Metric

Item No.	Opening Size mm	Square Hole	A mm	H mm	D mm	Weight g
OD16	6	1/4"	17.5	5	16	25
OD17	7	1/4"	17.5	5	22	32
OD18	8	1/4"	17.5	5	22	32
OD19	9	1/4"	17.5	5	24	33
OD110	10	1/4"	17.5	5	26	36
OD112	12	1/4"	17.5	5	28.7	36
OD113	13	1/4"	17.5	5	28.7	37.5
OD114	14	1/4"	17.5	5	28.7	37.5
OD115	15	1/4"	17.5	5	30	39
OD116	16	1/4"	22.5	5	32	41.5
OD117	17	1/4"	22.5	5	32.2	44.5
OD119	19	1/4"	22.5	5	35.5	47
OD122	22	1/4"	22.5	5	40.5	51
OD28	8	3/8"	25	5	22	42.5
OD29	9	3/8"	25	5	26	46
OD210	10	3/8"	25	5.5	26	48
OD211	11	3/8"	25	5.5	26	48
OD212	12	3/8"	25	7	30	60
OD213	13	3/8"	25	7	32	63
OD214	14	3/8"	25	8	33	64
OD215	15	3/8"	25	8	35	70
OD216	16	3/8"	25	8	35	70
OD217	17	3/8"	25	8	35	70
OD218	18	3/8"	30	8	38	89
OD219	19	3/8"	30	8	42	89
OD220	20	3/8"	30	8	44	91
OD221	21	3/8"	30	8	46	94
OD222	22	3/8"	30	8	48	96
OD223	23	3/8"	30	8	52	101
OD224	24	3/8"	30	8	52	101
OD225	25	3/8"	30	8	52	101
OD226	26	3/8"	30	8	55	100
OD227	27	3/8"	30	8	55	100
OD228	28	3/8"	35	8	56	115
OD230	30	3/8"	40	8	58	118
OD232	32	3/8"	40	8	58	118
OD234	34	3/8"	45	8	65	135
OD236	36	3/8"	45	8	70	145
OD240	40	3/8"	45	8	80	150
OD241	41	3/8"	45	8	80	150
OD242	42	3/8"	50	8	85	165
OD246	46	3/8"	50	8	90	165
OD250	50	3/8"	55	8	100	175
OD38	8	1/2"	35	8	33	68

Item No.	Opening Size mm	Square Hole	A mm	H mm	D mm	Weight g
OD310	10	1/2"	35	8	33	68
OD311	11	1/2"	35	8	33	68
OD312	12	1/2"	35	8	33	68
OD313	13	1/2"	35	8	33	68
OD314	14	1/2"	35	8	33	68
OD315	15	1/2"	35	9	35	77
OD316	16	1/2"	35	9	35	77
OD317	17	1/2"	35	9	35	77
OD318	18	1/2"	35	10	39	85
OD319	19	1/2"	35	10	39	85
OD320	20	1/2"	40	10	40	92
OD321	21	1/2"	40	10	42	95
OD322	22	1/2"	40	10	43	96
OD323	23	1/2"	40	10	45	96
OD324	24	1/2"	40	10	48	98
OD325	25	1/2"	40	14	50	105
OD326	26	1/2"	45	14	51	110
OD327	27	1/2"	45	14	51	110
OD328	28	1/2"	45	14	53	110
OD329	29	1/2"	45	14	56.5	111
OD330	30	1/2"	45	14	57	112
OD331	31	1/2"	45	14	60	114
OD332	32	1/2"	45	14	60	114
OD333	33	1/2"	45	14	61.94	115
OD334	34	1/2"	51	14	64	116
OD336	36	1/2"	51	14	70	118
OD338	38	1/2"	51	14	72	120
OD341	41	1/2"	51	14	82	122
OD342	42	1/2"	51	14	82	122
OD343	43	1/2"	51	14	85	125
OD346	46	1/2"	56	14	89	125
OD348	48	1/2"	56	14	94	134
OD350	50	1/2"	56	14	96	135
OD352	52	1/2"	56	14	100	145
OD354	54	1/2"	56	14	100	145
OD355	55	1/2"	55	14	100	145
OD362	62	1/2"	65	14	110	150
OD375	75	1/2"	70	14	124.5	160
OD411	11	3/4"	35	14	50	350
OD417	17	3/4"	35	20	62.5	431
OD421	21	3/4"	35	20	66	470
OD422	22	3/4"	35	20	70	500
OD424	24	3/4"	35	20	70	513
OD429	29	3/4"	45	20	72	609
OD430	30	3/4"	45	20	72	609
OD432	32	3/4"	45	20	72	609

Item No.	Opening Size mm	Square Hole	A mm	H mm	D mm	Weight g
OD436	36	3/4"	45	20	80	704
OD441	41	3/4"	51	20	88	846
OD450	50	3/4"	55	20	95	994
OD455	55	3/4"	60	20	102	1000
OD524	24	1"	60	28	85	1267
OD527	27	1"	60	28	85	1278
OD530	30	1"	60	28	87	1326
OD532	32	1"	60	28	90	1390
OD534	34	1"	60	28	90	1390

OYD Model

English

Item No.	Openings Size	Square Hole	A mm	H mm	D mm	Weight g
OYD18	1/4"	1/4"	17.5	5	21.5	32
OYD19	9/32"	1/4"	17.5	5	22	33.5
OYD110	5/16"	1/4"	17.5	5	23.5	35.5
OYD111	11/32"	1/4"	17.5	5	24	37.5
OYD112	3/8"	1/4"	17.5	5	26	41
OYD118	9/16"	1/4"	17.5	5	30.1	45
OYD28	1/4"	3/8"	25	5	22	50
OYD210	5/16"	3/8"	25	5	22	50
OYD211	11/32"	3/8"	25	5	26.3	50
OYD212	3/8"	3/8"	25	5	26	55
OYD214	7/16"	3/8"	25	5.5	26	61
OYD216	1/2"	3/8"	25	7	32	97
OYD218	9/16"	3/8"	25	8	35	123
OYD220	5/8"	3/8"	25	8	35	125
OYD222	11/16"	3/8"	25	8	35	126
OYD224	3/4"	3/8"	30	8	42	172
OYD226	13/16"	3/8"	30	8	45	188
OYD228	7/8"	3/8"	30	8	48	202
OYD230	15/16"	3/8"	30	8	52	223
OYD232	1"	3/8"	30	8	52	101
OYD234	1 1/16"	3/8"	30	8	55	100
OYD236	1 1/8"	3/8"	35	8	60	293
OYD238	1 3/16"	3/8"	40	8	60	293
OYD240	1 1/4"	3/8"	40	8	60	293
OYD242	1 5/16"	3/8"	40	8	65	317
OYD244	1 1/8"	3/8"	40	8	67.8	373
OYD246	1 7/16"	3/8"	45	8	70	383
OYD248	1 1/2"	3/8"	45	8	80	435
OYD250	1 9/16"	3/8"	45	8	80	435
OYD252	1 5/8"	3/8"	45	8	80	435
OYD254	1 11/16"	3/8"	50	8	85	465
OYD256	1 3/4"	3/8"	50	8	90	495
OYD258	1 13/16"	3/8"	50	8	90	500
OYD260	1 7/8"	3/8"	55	8	100	550
OYD262	1 15/16"	3/8"	55	8	100	500
OYD264	2"	3/8"	55	8	100	550
OYD266	2 1/16"	3/8"	55	8	100	550
OYD268	2 1/8"	3/8"	55	8	100	550
OYD270	2 1/3"	3/8"	35	8	100	135
OYD272	2 1/4"	3/8"	60*	8	110	605
OYD274	2 5/16"	3/8"	60*	8	110	605
OYD276	2 3/8"	3/8"	60*	8	110	605
OYD278	2 7/16"	3/8"	60*	8	110	605

Item No.	Opening Size mm	Square Hole	A mm	H mm	D mm	Weight g
OD536	36	1"	60	28	93	1412
OD541	41	1"	60	28	100	1575
OD546	46	1"	60	28	100	1616
OD550	50	1"	65	28	110	1902
OD555	55	1"	65	28	120	2112
OD560	60	1"	65	28	130	2296
OD565	65	1"	70	28	136	2591
OD572	72	1"	75	28	149	2650

* marks are special fittings, you should adjust the torque according to torque wrench manual

Item No.	Openings Size	Square Hole	A mm	H mm	D mm	Weight g
OYD280	2 1/2"	3/8"	65*	8	117	645
OYD282	2 9/16"	3/8"	65*	8	117	645
OYD284	2 5/8"	3/8"	65*	8	117	645
OYD288	2 3/4"	3/8"	65*	8	117	645
OYD292	2 7/8"	3/8"	65*	8	117	645
OYD314	7/16"	1/2"	35	8	31.5	144
OYD316	1/2"	1/2"	35	9	31.5	164
OYD318	9/16"	1/2"	35	8	33	155
OYD320	5/8"	1/2"	35	9	35	160
OYD322	1 1/16"	1/2"	35	9	35	189
OYD324	3/4"	1/2"	35	9	39	210
OYD326	13/16"	1/2"	40	10	42	220
OYD328	7/8"	1/2"	40	10	43	290
OYD330	15/16"	1/2"	40	10	48	325
OYD332	1"	1/2"	40	14	52	550
OYD334	1 1/16"	1/2"	45	14	51	593
OYD336	1 1/8"	1/2"	40	14	60	593
OYD338	1 3/16"	1/2"	45	14	60	665
OYD340	1 1/4"	1/2"	45	14	60	665
OYD342	1 5/16"	1/2"	50	14	64	750
OYD344	1 3/8"	1/2"	51	14	72	750
OYD346	2 3/16"	1/2"	50	14	80	945
OYD348	1 1/2"	1/2"	51	14	72	1000
OYD350	1 9/16"	1/2"	51	14	80	1000
OYD352	1 5/8"	1/2"	51	14	82	1000
OYD354	1 11/16"	1/2"	56	14	89	1000
OYD356	1 3/4"	1/2"	56	14	89	1110
OYD358	1 13/16"	1/2"	56	14	89	1110
OYD360	1 7/8"	1/2"	56	14	94	1175
OYD364	2"	1/2"	56	14	94	1175
OYD368	2 1/8"	1/2"	60	14	110	1475
OYD370	2 3/16"	1/2"	60	14	115	1475
OYD372	2 1/4"	1/2"	60	14	115	1475
OYD376	2 3/8"	1/2"	60	14	118	1475
OYD426	13/16"	3/4"	45	20	66	1072
OYD428	7/8"	3/4"	45	20	68	1111
OYD430	15/16"	3/4"	45	20	70	1174
OYD434	17/16"	3/4"	45	20	72	1206
OYD444	1 3/8"	3/4"	45	20	77.1	1250
OYD446	2 3/16"	3/4"	45	20	80	1407
OYD456	1 3/4"	3/4"	55	20	95	1450
OYD492	2 7/8"	3/4"	75	20	132	1500

* marks are special fittings, you should adjust the torque according to torque wrench manual