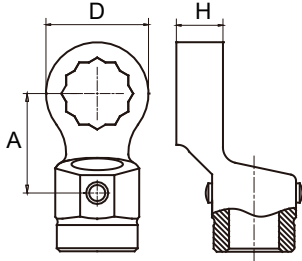


QR Series Round Hole Box End

For Round Holder Head Torque Wrenches



QR Model

Metric

Item No.	Ring Size mm	Round Hole mm	A mm	H mm	D mm	Weight g
QRI26	6	φ 12	20.5	5	13	67
QRI27	7	φ 12	20.5	5	13	65
QRI28	8	φ 12	20.5	5	13	63
QRI29	9	φ 12	20.5	5	14.5	63
QRI210	10	φ 12	20.5	5	16	63
QRI211	11	φ 12	20.5	5	17.5	63
QRI212	12	φ 12	20.5	5	19	63
QRI67	7	φ 16	31.8	8	13	70
QRI68	8	φ 16	31.8	8	14	74
QRI69	9	φ 16	31.8	9	16	78
QRI610	10	φ 16	31.8	11	16	82
QRI611	11	φ 16	31.8	11	18.5	87
QRI612	12	φ 16	31.8	11	21.5	93
QRI613	13	φ 16	31.8	11	21.5	100
QRI614	14	φ 16	31.8	11	23	105
QRI615	15	φ 16	31.8	11	24	111
QRI616	16	φ 16	31.8	12	26	118
QRI617	17	φ 16	31.8	12	27	125
QRI618	18	φ 16	31.8	12	28.5	132
QRI619	19	φ 16	31.8	12	30.5	140
QRI620	20	φ 16	31.8	15	33	150
QRI621	21	φ 16	31.8	15	33	155
QRI622	22	φ 16	31.8	15	34.5	155
QRI623	23	φ 16	31.8	15	36	155
QRI624	24	φ 16	31.8	15	37.5	160
QRI625	25	φ 16	31.8	15	40	165
QRI626	26	φ 16	31.8	16	41.5	175
QRI627	27	φ 16	31.8	16	41.5	175
QRI628	28	φ 16	31.8	16	45	185
QRI629	29	φ 16	31.8	16	45	185
QRI630	30	φ 16	31.8	16	45	185
QRI631	31	φ 16	31.8	16	47.5	185
QRI632	32	φ 16	31.8	16	47.5	185
QRI636	36	φ 16	41.8	16	55	215
QRI638	38	φ 16	41.8	16	60	230
QRI641	41	φ 16	41.8	18	65	245
QRI642	42	φ 16	41.8	18	65	245
QRI646	46	φ 16	51.8	18	68	250
QRI650	50	φ 16	51.8	18	78	280
QRI655	55	φ 16	51.8	18	86	300
QR2222	22	φ 22	56	25	62	900
QR2224	24	φ 22	56	25	65	1000
QR2227	27	φ 22	56	25	68	1050
QR2228	28	φ 22	56	25	68	1050
QR2230	30	φ 22	56	25	72	1100
QR2231	31	φ 22	56	25	74	1100
QR2232	32	φ 22	56	25	74	1100

Item No.	Ring Size mm	Round Hole mm	A mm	H mm	D mm	Weight g
QR2233	33	φ 22	56	25	74	1100
QR2234	34	φ 22	56	25	76	1150
QR2236	36	φ 22	56	25	80	1150
QR2241	41	φ 22	56	25	80	1200
QR2246	46	φ 22	56	25	84	1250
QR2250	50	φ 22	56	25	84	1250
QR2255	55	φ 22	56	25	90	1300
QR2260	60	φ 22	61	25	94	1350
QR2265	65	φ 22	65	25	100	1400

QYR Model

English

Item No.	Ring Size	Round Hole mm	A mm	H mm	D mm	Weight g
QYR168	1/4"	φ 16	31.8	8	13	70
QYR1610	5/16"	φ 16	31.8	8	14.2	77
QYR1612	3/8"	φ 16	31.8	8	17	92
QYR1614	7/16"	φ 16	31.8	10	18.5	98
QYR1616	1/2"	φ 16	31.8	11	22	100
QYR1618	9/16"	φ 16	31.8	11	23	105
QYR1620	5/8"	φ 16	31.8	12	26	118
QYR1622	11/16"	φ 16	31.8	12	28.5	118
QYR1624	3/4"	φ 16	31.8	12	30.5	140
QYR1626	13/16"	φ 16	31.8	15	33	150
QYR1628	7/8"	φ 16	31.8	15	34.5	155
QYR1630	15/16"	φ 16	31.8	15	37.5	160
QYR1632	1"	φ 16	31.8	16	41.5	165
QYR1634	1 1/16"	φ 16	31.8	16	41.5	175
QYR1636	1 1/8"	φ 16	31.8	16	45	185
QYR1640	1 1/4"	φ 16	31.8	16	47.5	185
QYR1642	1 5/16"	φ 16	41.8*	16	51	200
QYR1646	1 7/16"	φ 16	41.8*	16	55	210
QYR1648	1 1/2"	φ 16	41.8*	16	58	220
QYR1652	1 5/8"	φ 16	51.8*	18	65	235
QYR1656	1 3/4"	φ 16	51.8*	18	68	245
QYR1660	1 7/8"	φ 16	51.8*	18	72	258
QYR1662	1 15/16"	φ 16	51.8*	18	74	260
QYR1664	2"	φ 16	51.8*	18	75	260
QYR2216	1/2"	φ 22	56	25	30	480
QYR2224	3/4"	φ 22	56	25	50	800
QYR2246	1 7/16"	φ 22	56	25	76	1150
QYR2248	1 1/2"	φ 22	56	25	80	1180
QYR2252	1 5/8"	φ 22	56	25	82	1200
QYR2256	1 3/4"	φ 22	56	25	84	1250
QYR2258	1 13/16"	φ 22	56	25	84	1250
QYR2264	2"	φ 22	56	25	84	1300

* marks are special fittings, you should adjust the torque according to torque wrench manual