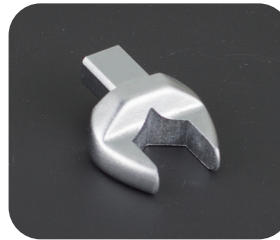
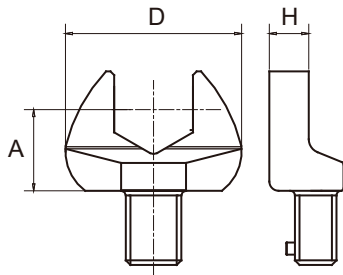


V-OH Series
Square Drive V-Shaped Open End

For Rectangular Shank Head Torque Wrenches



V-OH Model

Metric

| Item No. | Opening Size mm | Shank Size mm | A mm | H mm | D mm | Weight g |
|----------|-----------------|---------------|------|------|------|----------|
| V-OH97 | 7 | 9x12 | 17.5 | 5 | 22 | 40 |
| V-OH98 | 8 | 9x12 | 17.5 | 5 | 22 | 39 |
| V-OH99 | 9 | 9x12 | 17.5 | 5.5 | 26 | 38 |
| V-OH910 | 10 | 9x12 | 17.5 | 5.5 | 26 | 42 |
| V-OH911 | 11 | 9x12 | 17.5 | 5.5 | 26 | 41 |
| V-OH912 | 12 | 9x12 | 17.5 | 7 | 30 | 43 |
| V-OH913 | 13 | 9x12 | 17.5 | 7 | 30 | 48 |
| V-OH914 | 14 | 9x12 | 17.5 | 8 | 35 | 52 |
| V-OH915 | 15 | 9x12 | 17.5 | 8 | 35 | 51 |
| V-OH916 | 16 | 9x12 | 17.5 | 8.5 | 38 | 58 |
| V-OH917 | 17 | 9x12 | 17.5 | 8.5 | 38 | 60 |
| V-OH918 | 18 | 9x12 | 20* | 9 | 42 | 71 |
| V-OH919 | 19 | 9x12 | 20* | 9 | 42 | 74 |
| V-OH920 | 20 | 9x12 | 20* | 9 | 42 | 76 |
| V-OH921 | 21 | 9x12 | 22* | 11 | 46 | 95 |
| V-OH922 | 22 | 9x12 | 22* | 11 | 46 | 95 |
| V-OH924 | 24 | 9x12 | 25* | 11 | 48 | 106 |
| V-OH927 | 27 | 9x12 | 30* | 13 | 58 | 235 |
| V-OH932 | 32 | 9x12 | 40* | 13 | 64 | 267 |
| V-OH1413 | 13 | 14x18 | 25 | 7 | 30 | 128 |

| Item No. | Opening Size mm | Shank Size mm | A mm | H mm | D mm | Weight g |
|----------|-----------------|---------------|-------|------|------|----------|
| V-OH1414 | 14 | 14x18 | 25 | 8 | 35 | 129 |
| V-OH1415 | 15 | 14x18 | 25 | 8 | 35 | 132 |
| V-OH1416 | 16 | 14x18 | 25 | 9 | 38 | 140 |
| V-OH1417 | 17 | 14x18 | 25 | 9 | 38 | 136 |
| V-OH1418 | 18 | 14x18 | 25 | 10 | 42 | 147 |
| V-OH1419 | 19 | 14x18 | 25 | 10 | 42 | 145 |
| V-OH1420 | 20 | 14x18 | 25 | 10 | 42 | 155 |
| V-OH1421 | 21 | 14x18 | 25 | 11 | 50 | 171 |
| V-OH1422 | 22 | 14x18 | 25 | 11 | 50 | 165 |
| V-OH1424 | 24 | 14x18 | 25 | 12 | 53 | 167 |
| V-OH1427 | 27 | 14x18 | 30* | 13 | 60 | 219 |
| V-OH1428 | 28 | 14x18 | 30* | 13 | 60 | 222 |
| V-OH1429 | 29 | 14x18 | 30* | 13 | 60 | 222 |
| V-OH1430 | 30 | 14x18 | 30* | 14 | 66 | 245 |
| V-OH1432 | 32 | 14x18 | 32.5* | 14 | 66 | 246 |
| V-OH1434 | 34 | 14x18 | 32.5* | 14 | 66 | 239 |
| V-OH1436 | 36 | 14x18 | 32.5* | 14 | 66 | 275 |

* marks are special fittings, you should adjust the torque according to torque wrench manual