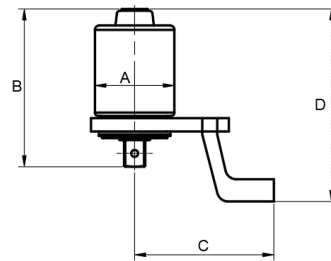


## LM Series Lightweight Torque Multiplier

- Compact structure, light weight, easy to carry and use.
- Backlash safety protection device for 1500N.m and above, safer to use.



| Item No. | Square Drive | Output Square Drive | Torque Range |          | Modulus | Ratio | Dimensions (mm) |     |     |     | Weight*<br>Kg |
|----------|--------------|---------------------|--------------|----------|---------|-------|-----------------|-----|-----|-----|---------------|
|          |              |                     | N.m          | Lb.ft    |         |       | φA              | B   | C   | D   |               |
| LMH41000 | 1/2"         | 3/4"                | 200-1000     | 150-750  | 1.5     | 4:1   | 72              | 142 | 125 | 173 | 3.8           |
| LMH51500 | 1/2"         | 1"                  | 300-1500     | 220-1100 | 1.5     | 5:1   | 82              | 153 | 130 | 190 | 4.2           |
| LMH52000 | 1/2"         | 1"                  | 400-2000     | 300-1500 | 1.5     | 5:1   | 82              | 153 | 130 | 190 | 4.2           |
| LMF52500 | 1/2"         | 1"                  | 500-2500     | 380-1900 | 1.75    | 18:1  | 96              | 173 | 138 | 211 | 4.7           |
| LMF53000 | 1/2"         | 1"                  | 600-3000     | 440-2200 | 1.75    | 18:1  | 96              | 173 | 138 | 211 | 4.7           |
| LMF63500 | 1/2"         | 1 1/2"              | 700-3500     | 500-2500 | 1.75    | 18:1  | 96              | 199 | 145 | 256 | 5.4           |
| LMF64000 | 1/2"         | 1 1/2"              | 800-4000     | 600-3000 | 1.75    | 18:1  | 96              | 199 | 145 | 256 | 5.4           |

\* Weight is estimated.