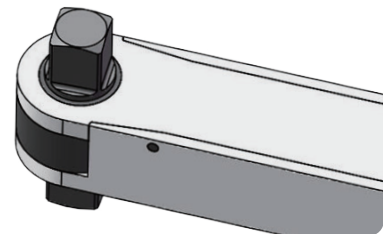


**AUMR Series Aluminum Torque Wrench with Ratchet Head**

- Accuracy:  $\pm 4\%$  from 20% to 100% of capacity.
- Integrated aluminum alloy overall design, light and strong.
- Unique ratchet structure design. With this ratchet head you can continuously swing the handle to tighten the bolt, instead of putting it on as often as a conventional head.
- Both sides with square drive, for both direction application, easy to handle.
- Special window for main scale, and Minor scale near the end of the handle, better resolution.
- With Metric or Imperial (depending on specific model), easy to read.
- Unique locking end design, fix torque reliably. Effectively avoid the possibility of adjustment to torque values caused by unintentional or deliberate operation.
- Knurled handle for secure and comfortable grip.



Major scale



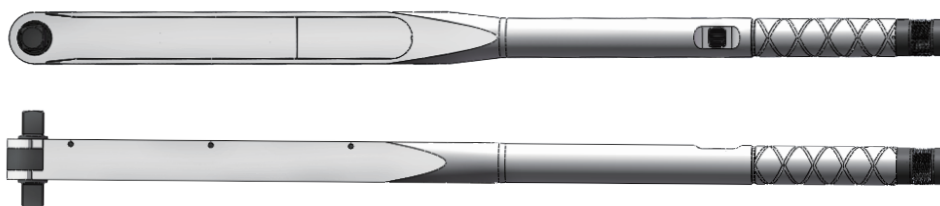
Minor scale



Unique locking end design

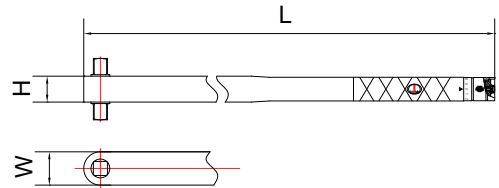
**100% Calibrated**

- Unique serial number for each torque wrench, corresponding to the certificate of calibration.



#### AUMR Model (Without Extension Bar)

#### Ratchet Head Aluminum Torque Wrench



Metric

Item No.	Square Drive	Torque Range		Increment Nm	Length (L) mm	Width x Height (W) x (H) mm	Weight kg	Extension bar
		Nm	Lb.ft					
AUMR4550	3/4"	100-550	80-400	1.0	811	45x35	2.9	Without
AUMR4760	3/4"	160-760	120-560	1.5	811	45x35	3.2	Without



Specially designed

### Shockproof packaging

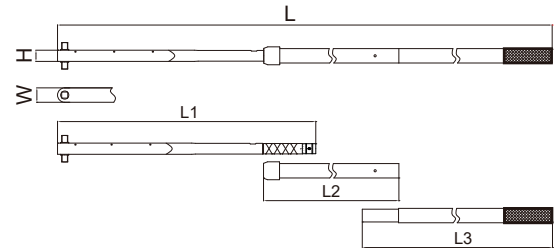


#### AUMR Model (With Extension Bar)

#### Ratchet Head Aluminum Torque Wrench



Sample model: AUMR41000



Metric

Item No.	Square Drive	Torque Range		Increment Nm	L1 mm	L2 mm	L3 mm	L mm	W x H mm	Weight kg	Extension bar
		Nm	Lb.ft								
AUMR41000	3/4"	200-1000	150-750	2.5	811	754	/	1400	45x35	5.6	1
AUMR51500	1"	300-1500	200-1100	2.5	930	930	/	1598	60x40	9.8	1
AUMR52000	1"	400-2000	300-1500	5	930	930	930	2308	60x40	12	2

Note: L1, L2, L3 are the lengths of the three pipes, the sum of the three is not the total length L, because there is overlap at the joints.



Specially designed

### Shockproof packaging

