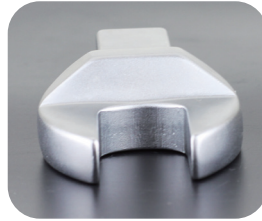
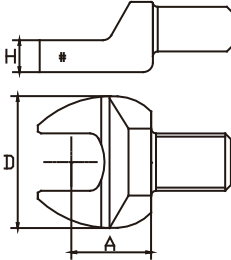


OH

Open End

for Rectangular Shank Head Torque Wrench

OYH (English unit)



NovaTork

Metric

Item No.	Openings Size mm	Shank Size mm	A mm	H mm	D mm	Weight g
OH94	4	9x12	17.5	4	22	35
OH95	5	9x12	17.5	4	22	35
OH95.5	5.5	9x12	17.5	5	22	38
OH96	6	9x12	17.5	5.5	22	38
OH97	7	9x12	17.5	5.5	22	38
OH98	8	9x12	17.5	5.5	22	37
OH99	9	9x12	17.5	6	25	44
OH910	10	9x12	17.5	6	25	43
OH911	11	9x12	17.5	6	25	42
OH912	12	9x12	17.5	7	29	48
OH913	13	9x12	17.5	7	29	47
OH914	14	9x12	17.5	8	33	58
OH915	15	9x12	17.5	8	33	57
OH916	16	9x12	17.5	8	38	56
OH917	17	9x12	17.5	8	38	54
OH918	18	9x12	25*	8	43	80
OH919	19	9x12	25*	8	43	75
OH920	20	9x12	25*	8	48	90
OH921	21	9x12	25*	8	48	100
OH922	22	9x12	25*	8	48	95
OH923	23	9x12	25*	8	52	100
OH924	24	9x12	25*	8	52	110
OH925	25	9x12	30*	8	57	110
OH926	26	9x12	30*	8	57	110
OH927	27	9x12	30*	8	57	140
OH928	28	9x12	30*	8	57	142
OH929	29	9x12	30*	8	57	142
OH930	30	9x12	35*	8	66	145
OH931	31	9x12	35*	8	66	145
OH932	32	9x12	35*	8	66	145
OH933	33	9x12	40*	8	68	145
OH934	34	9x12	40*	8	68	145
OH935	35	9x12	40*	8	68	145
OH936	36	9x12	40*	8	68	145
OH937	37	9x12	40*	8	68	145
OH938	38	9x12	40*	8	68	145
OH939	39	9x12	50*	8	84	145
OH940	40	9x12	50*	8	84	145
OH941	41	9x12	50*	8	84	145
OH942	42	9x12	50*	8	90	160
OH943	43	9x12	50*	8	90	165
OH944	44	9x12	50*	8	90	165
OH945	45	9x12	50*	8	90	165
OH946	46	9x12	50*	8	90	165
OH947	47	9x12	55*	8	100	175
OH948	48	9x12	55*	8	100	175
OH949	49	9x12	55*	8	100	175
OH950	50	9x12	55*	8	100	175
OH951	51	9x12	55*	8	100	175
OH952	52	9x12	55*	8	100	175

Item No.	Openings Size mm	Shank Size mm	A mm	H mm	D mm	Weight g
OH953	53	9x12	55*	8	100	175
OH955	55	9x12	55*	8	100	175
OH956	56	9x12	60*	8	110	215
OH958	58	9x12	60*	8	110	215
OH960	60	9x12	60*	8	110	215
OH962	62	9x12	60*	8	110	215
OH965	65	9x12	65*	8	117	225
OH967	67	9x12	65*	8	117	225
OH968	68	9x12	65*	8	117	225
OH970	70	9x12	65*	8	117	225
OH990	90	9x12	90*	8	165	300
OHI46	6	14x18	25	7	30	120
OHI47	7	14x18	25	7	30	120
OHI48	8	14x18	25	7	30	120
OHI49	9	14x18	25	7	30	118
OHI410	10	14x18	25	7	30	116
OHI411	11	14x18	25	7	30	114
OHI412	12	14x18	25	7	30	112
OHI413	13	14x18	25	8	32	110
OHI414	14	14x18	25	8	32	116
OHI415	15	14x18	25	8	32	115
OHI416	16	14x18	25	9	38	128
OHI417	17	14x18	25	9	38	127
OHI418	18	14x18	25	10	42	138
OHI419	19	14x18	25	10	42	137
OHI420	20	14x18	25	12	48	145
OHI421	21	14x18	25	12	48	158
OHI422	22	14x18	25	12	48	155
OHI423	23	14x18	25	13	52	156
OHI424	24	14x18	25	13	52	159
OHI425	25	14x18	25	13	52	163
OHI426	26	14x18	30*	14	57	163
OHI427	27	14x18	30*	14	57	230
OHI428	28	14x18	30*	14	57	255
OHI429	29	14x18	30*	14	57	255
OHI430	30	14x18	35*	14	65	255
OHI431	31	14x18	35*	14	65	255
OHI432	32	14x18	35*	14	65	255
OHI433	33	14x18	40*	14	68	360
OHI434	34	14x18	40*	14	68	360
OHI435	35	14x18	40*	14	68	365
OHI436	36	14x18	40*	14	68	365
OHI437	37	14x18	40*	14	68	440
OHI438	38	14x18	40*	14	68	440
OHI439	39	14x18	50*	14	84	435
OHI440	40	14x18	50*	14	84	430
OHI441	41	14x18	50*	14	84	430
OHI442	42	14x18	50*	14	84	430
OHI443	43	14x18	50*	14	90	480
OHI444	44	14x18	50*	14	90	550

Item No.	Openings Size mm	Shank Size mm	A mm	H mm	D mm	Weight g
OHI445	45	14x18	50*	14	90	600
OHI446	46	14x18	50*	14	90	595
OHI447	47	14x18	55*	14	100	595
OHI448	48	14x18	55*	14	100	595
OHI449	49	14x18	55*	14	100	610
OHI450	50	14x18	55*	14	100	610
OHI451	51	14x18	55*	14	100	600
OHI452	52	14x18	55*	14	100	600
OHI453	53	14x18	55*	14	100	600
OHI454	54	14x18	55*	14	100	600
OHI455	55	14x18	55*	14	100	585
OHI456	56	14x18	60*	14	110	650
OHI457	57	14x18	60*	14	110	650
OHI458	58	14x18	60*	14	110	650
OHI459	59	14x18	60*	14	110	650
OHI460	60	14x18	60*	14	110	650
OHI461	61	14x18	60*	14	110	640
OHI462	62	14x18	60*	14	110	650
OHI465	65	14x18	70*	14	129	680
OHI466	66	14x18	70*	14	129	680
OHI467	67	14x18	70*	14	129	690
OHI468	68	14x18	70*	14	129	690
OHI470	70	14x18	70*	14	129	700
OHI472	72	14x18	70*	14	129	690
OHI475	75	14x18	70*	14	129	720
OHI477	77	14x18	80*	14	150	730
OHI478	78	14x18	80*	14	150	730
OHI479	79	14x18	80*	14	150	730
OHI480	80	14x18	80*	14	156	750
OHI485	85	14x18	80*	14	156	750
OHI486	86	14x18	80*	14	156	750
OHI488	88	14x18	80*	14	156	775
OHI490	90	14x18	80*	14	156	750
OH2417	17	24x32	35	25	50	650
OH2418	18	24x32	35	25	50	650
OH2419	19	24x32	35	25	50	650
OH2420	20	24x32	35	25	61	680
OH2421	21	24x32	35	25	61	680
OH2422	22	24x32	35	25	61	700
OH2424	24	24x32	35	25	61	680
OH2425	25	24x32	35	25	61	680
OH2426	26	24x32	35	25	67	715
OH2427	27	24x32	35	25	67	718
OH2428	28	24x32	35	25	67	719
OH2429	29	24x32	35	25	67	720
OH2430	30	24x32	35	25	69	720
OH2432	32	24x32	35	25	69	725
OH2433	33	24x32	40*	25	74	809
OH2434	34	24x32	40*	25	74	730
OH2436	36	24x32	40*	25	74	735

Metric (Continued)

Item No.	Openings Size mm	Shank Size mm	A mm	H mm	D mm	Weight g
OH2438	38	24x32	40*	25	74	809
OH2440	40	24x32	40*	25	74	800
OH2441	41	24x32	50*	25	86	925
OH2442	42	24x32	50*	25	92	1000
OH2444	44	24x32	50*	25	92	1000
OH2445	45	24x32	50*	25	92	1000
OH2446	46	24x32	50*	25	92	1000
OH2447	47	24x32	55*	25	104	1000
OH2448	48	24x32	55*	25	104	1100
OH2450	50	24x32	55*	25	104	1150
OH2455	55	24x32	55*	25	104	1300
OH2456	56	24x32	60*	25	114	1300
OH2457	57	24x32	60*	25	114	1330
OH2460	60	24x32	60*	25	114	1330
OH2462	62	24x32	60*	25	114	1330
OH2465	65	24x32	70*	25	134	1337
OH2467	67	24x32	70*	25	134	1415

Item No.	Openings Size mm	Shank Size mm	A mm	H mm	D mm	Weight g
OH2470	70	24x32	70*	25	134	1620
OH2475	75	24x32	70*	25	134	1650
OH2480	80	24x32	80*	25	155	1650
OH2717	17	27x36	40	28	59	1250
OH2718	18	27x36	40	28	59	1250
OH2719	19	27x36	40	28	59	1250
OH2720	20	27x36	50	28	73	1250
OH2722	22	27x36	50	28	73	1250
OH2724	24	27x36	50	28	73	1250
OH2726	26	27x36	50	28	79	1250
OH2727	27	27x36	50	28	79	1250
OH2728	28	27x36	50	28	79	1250
OH2729	29	27x36	50	28	79	1250
OH2730	30	27x36	50	28	85	1295
OH2732	32	27x36	50	28	85	1295
OH2734	34	27x36	50	28	88	1330
OH2736	36	27x36	50	28	88	1335

Item No.	Openings Size mm	Shank Size mm	A mm	H mm	D mm	Weight g
OH2738	38	27x36	50	28	90	1338
OH2741	41	27x36	50	28	92	1440
OH2742	42	27x36	50	28	98	1440
OH2744	44	27x36	50	28	98	1440
OH2745	45	27x36	50	28	98	1440
OH2746	46	27x36	50	28	98	1440
OH2750	50	27x36	55*	28	118	1450
OH2755	55	27x36	55*	25	118	1455
OH2760	60	27x36	60*	28	130	1460
OH2761	61	27x36	65*	28	131	1462
OH2765	65	27x36	65*	28	135	1462
OH2770	70	27x36	70*	28	142	1465
OH2775	75	27x36	75*	28	148	1780
OH2780	80	27x36	80*	28	158	2600
OH2785	85	27x36	85*	28	164	2850
OH2790	90	27x36	90*	28	176	2900
OH2795	95	27x36	95*	28	180	3000

* marks are to special fittings, you should adjust the torque according to torque wrench manual

English

Item No.	Openings Size	Shank Size mm	A mm	H mm	D mm	Weight g
OYH94	1/8"	9x12	17.5	5.5	22	38
OYH98	1/4"	9x12	17.5	5.5	22	38
OYH910	5/16"	9x12	17.5	5.5	22	37
OYH912	3/8"	9x12	17.5	6	25	43
OYH914	7/16"	9x12	17.5	6	25	42
OYH916	1/2"	9x12	17.5	7	29	47
OYH917	17/32"	9x12	17.5	8	33	58
OYH918	9/16"	9x12	17.5	8	33	57
OYH920	5/8"	9x12	17.5	8	38	56
OYH922	11/16"	9x12	17.5	8	38	80
OYH924	3/4"	9x12	25*	8	42	75
OYH926	13/16"	9x12	25*	8	48	100
OYH928	7/8"	9x12	25*	8	48	95
OYH930	15/16"	9x12	25*	8	53	110
OYH932	1"	9x12	30*	8	57	110
OYH934	1 1/16"	9x12	30*	8	64	140
OYH936	1 1/8"	9x12	35*	8	70	145
OYH940	1 1/4"	9x12	35*	8	70	145
OYH944	1 3/8"	9x12	35*	8	80	145
OYH946	1 7/16"	9x12	40*	8	80	145
OYH948	1 1/2"	9x12	45*	8	82	145

Item No.	Openings Size	Shank Size mm	A mm	H mm	D mm	Weight g
OYH952	1 5/8"	9x12	45*	8	85	145
OYH1416	1/2"	14x18	25	7	30	110
OYH1418	9/16"	14x18	25	8	32	115
OYH1420	5/8"	14x18	25	9	38	128
OYH1422	11/16"	14x18	25	9	38	127
OYH1424	3/4"	14x18	25	10	42	137
OYH1426	13/16"	14x18	25	11	50	158
OYH1428	7/8"	14x18	25	11	50	155
OYH1430	15/16"	14x18	25	13	52	159
OYH1432	1"	14x18	25	13	52	163
OYH1434	1 1/16"	14x18	30*	14	57	230
OYH1436	1 1/8"	14x18	30*	14	57	255
OYH1438	1 3/16"	14x18	30*	14	65	255
OYH1440	1 1/4"	14x18	35*	14	65	255
OYH1442	1 5/16"	14x18	35*	14	75	280
OYH1444	1 3/8"	14x18	40*	14	68	365
OYH1446	1 7/16"	14x18	40*	14	68	365
OYH1448	1 1/2"	14x18	45*	14	85	440
OYH1452	1 5/8"	14x18	50*	14	90	430
OYH1456	1 3/4"	14x18	50*	14	100	595
OYH1458	1 13/16"	14x18	50*	14	100	595

Item No.	Openings Size	Shank Size mm	A mm	H mm	D mm	Weight g
OYH1460	1 7/8"	14x18	50*	14	106	610
OYH1464	2"	14x18	55*	14	106	600
OYH1468	2 1/8"	14x18	55*	14	116	585
OYH1470	2 3/16"	14x18	60*	14	121	650
OYH1472	2 1/4"	14x18	60*	14	121	650
OYH1476	2 3/8"	14x18	60*	14	121	650
OYH1488	2 3/4"	14x18	70*	14	135	700
OYH1492	2 7/8"	14x18	70*	13	138	710
OYH2420	5/8"	24x32	35	25	62	650
OYH2424	3/4"	24x32	35	25	65	680
OYH2428	7/8"	24x32	35	25	68	700
OYH2436	1 1/8"	24x32	35	25	68	719
OYH2440	1 1/4"	24x32	35	25	68	602
OYH2452	1 5/8"	24x32	50*	25	86	902
OYH2456	1 3/4"	24x32	50*	25	92	1000
OYH2460	15/8"	24x32	50*	25	103	1100
OYH2464	2"	24x32	50*	25	106	1150
OYH2470	2 9/16"	24x32	55*	25	120	1150
OYH2472	2 1/4"	24x32	55*	25	120	1200
OYH2770	2 3/16"	27x36	55*	25	124	1455
OYH2782	2 9/16"	27x36	65*	25	136	1465

* marks are to special fittings, you should adjust the torque according to torque wrench manual

Note: Due to the product improvement, the technical parameters are subject to variation, please refer to the actual production from the factory.

For more details, please contact:

TY HARDWARE & MACHINERY SDN BHD

35 Jalan Metro Perdana Barat 11, Sri Edaran Industrial Park, 52100 Kuala Lumpur, Malaysia

Tel : +603 6259 5990, +6019-213 9990 Fax: +603 6250 8016 Email: inquiry@tyhardware.com.my